

Indication of Costs

The table below gives a rough indication as to the comparative costs between a production shot in Digibeta, Super16 and HDCam. Assumptions include eight week shoot schedule and using 60 rolls of stock.

	Digibeta (790)	Super16	HDCam (750)
Camera hire (8 weeks)	£10,600	£20,800	£12,700
Stock and working copies	£3,100	£36,480	£5,100
Shooting Sub Total	£13,700	£57,280	£17,800
Post - neg cut, grade, conform, finish & masters	£14,320	£22,720	£14,320
Total	£28,020	£80,000	£32,120

Glossary

1080

HDTV with 1080 lines. Most commonly used system for acquisition and transmission.

720

HDTV with 720 lines. A less commonly used standard for acquisition and transmission.

AJ/HDC 27FE

Panasonic 720 camcorder switchable between 24P and 25P with variable frame rate.

Aspect Ratio

For HDTV all pictures are 16:9 ratio.

CineAlta

Sony's high end acquisition system. Used for 24 frames per second capture (film style).

DOLBY Surround Sound

Widely used system for applying surround sound to recordings, transmission and listening in the home.

DTS Surround Sound

Alternative system used for acquisition, transmission and listening in the home.

DVC PRO HD

Panasonic HDTV tape standard using 720 lines, switchable between various frame rates.

Frame Rates

Number of frames per second. For progressive systems can be 24, 25, 30 frames per second (fps). For interlaced (i) systems 50, 60 frames per second (fps).

HDCAM

Sony HDTV tape standard using 1080 lines, switchable between various frame rates.

HDD5

Panasonic digital HDTV – VTR often used for top end mastering.

HDV

Consumer based tape format to record HDTV on DV cassettes.

HDW730

Sony HDTV 1080 camcorder, switchable between 50i and 60i.

HDW 750P

Sony HDTV 1080 camcorder, switchable between 50i and 25P.

HDWF 900

Sony full spec 1080 camcorder, recording in HDCAM, switchable between 24P, 25P, 30P, 60i and 50i.

HVR Z1E

Sony 1080 professional version of the consumer HDV camcorder. Can record 1080/50i or 720/25p.

Interlaced (i)

Looks like TV. The display writes alternate lines so lines 1, 3, 5 etc then lines 2, 4, 6 etc. as in the standard definition (SD) Pal system.

PAL & NTSC

Current TV standards with 625 lines (UK) and 525 lines (US).

Progressive (p)

Looks like film. The display writes lines in order so lines 1, 2, 3, 4 etc.

Standards Conversion

The process of translating video from one television standard to another. Often referred to as down conversion, up conversion and cross conversion. E.g. It is possible to take a programme shot on 1080/50i and down convert to 625/50i (PAL) to edit and transmit in standard definition (SD)

VARI-CAM

Panasonic HD system using 720 lines with variable frame rates to allow fast and slow-mo.

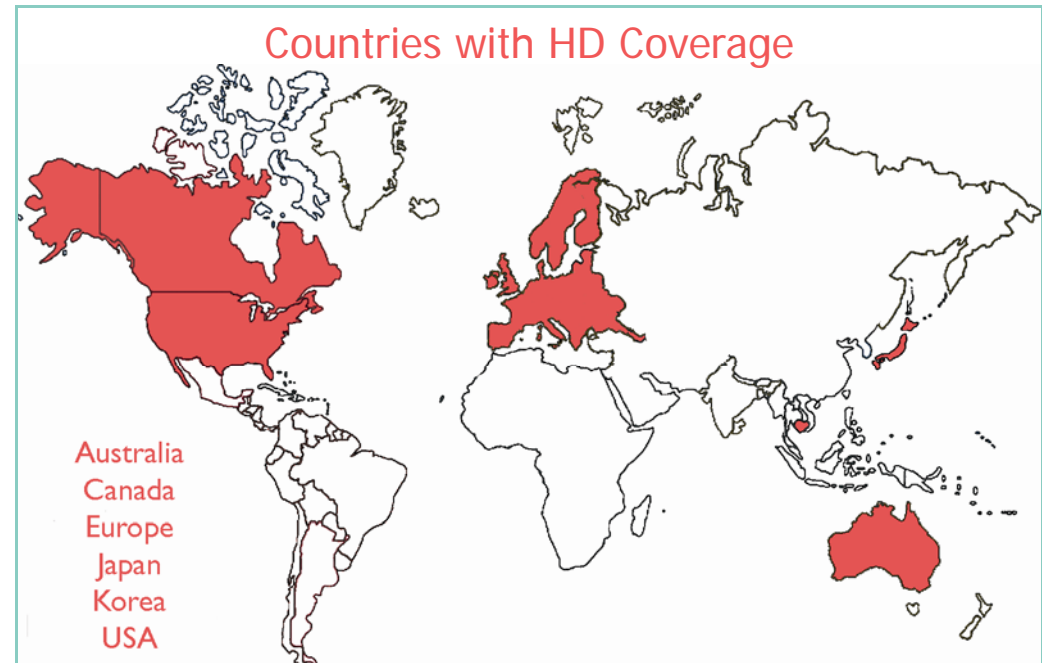


+44 (0)20 8941 1000

The Easy Guide to HD



The *Original* High Definition Company



+44 (0)20 8941 1000

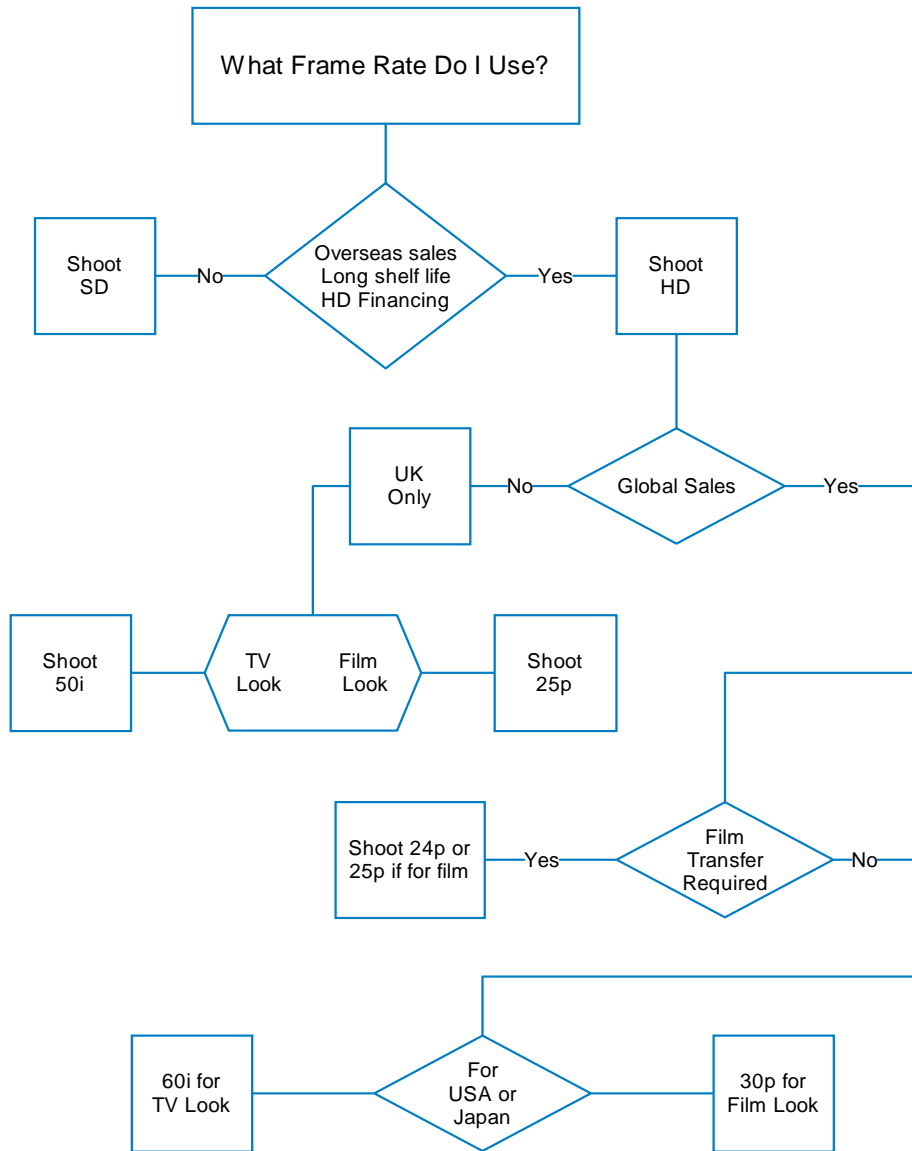
www.shooting-partners.co.uk



+44 (0)20 8941 4500

www.annavalley.co.uk

HDTV Decision Chart



This is a simplified guide - there are many routes. For expert advice ring **Shooting|Partners** on +44 (0)20 8941 1000

Displays Information

As with any emerging market there is potential for great confusion as to what is genuine HD and what is not. Just because a display device can accept an HDTV signal does not mean that it is capable of

displaying that signal in true high definition. Some displays have built in down converters which may degrade the picture. The resolution that a display is able to display without any conversion is called its

'native resolution'. True high definition displays have 1920 pixels horizontally and 1080 pixels vertically. This applies to both projectors and plasmas. Anna Valley has true HD displays.

Table of Resolutions					
Name	Pixel Width & Height	Aspect Ratio	Name	Pixel Width & Height	Aspect Ratio
VGA	640 x 600	4 x 3	HDTV	1920 x 1080	16 x 9
SVGA	800 x 600	4 x 3	UXGA	1600 x 1200	4 x 3
XGA	1024 x 768	4 x 3	UXGA+	1920 x 1200	8 x 5
WXGA	1366 x 768	16 x 9	QXGA	2048 x 1536	4 x 3
SXGA	1280 x 1024	5 x 4	QUXGA	3200 x 2400	4 x 3
SXGA+	1400 x 1050	4 x 3	QUXGA+	3840 x 2400	8 x 5

Resolution Comparison

